

UNIQUE STYLE PLATFORM
ESSENTIAL INSPIRATION FOR CREATIVE MINDS

USP INSPIRE:
SCI-FI DESERT

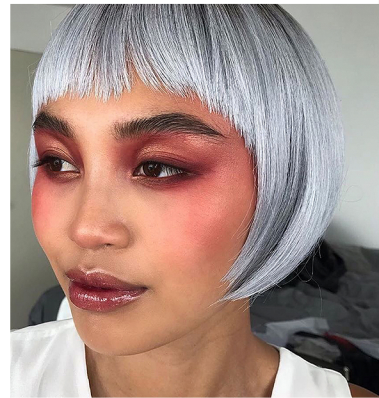
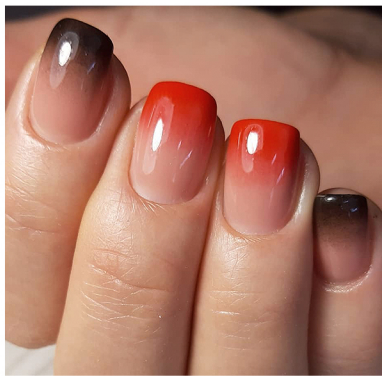


As we look to the future, a **post-apocalyptic** mood emerges, combining **functional design** with **sci-fi style** and **otherworldly desert landscapes**.

Dune, set for release in 2021, is an upcoming epic science fiction film directed by **Denis Villeneuve** and based on the 1965 novel of the same name by **Frank Herbert**. Starring **Timothée Chalamet** and **Zendaya**, the action takes place on desert planet *Arrakis*, also known as *Dune*, the only source of a new substance that extends human life and provides superhuman levels of thought.

USP INSPIRE: SCI-FI DESERT

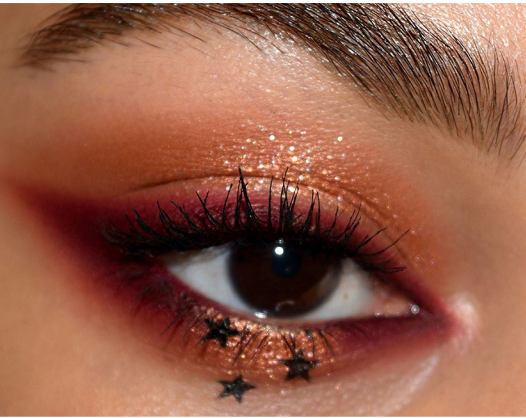
MOOD



Be inspired by a post-apocalyptic mood blending neutral hues, matte leathers and face masks, with sandy or bleached textures and futuristic ombrés

USP INSPIRE: SCI-FI DESERT

COLOUR



17-1633
13-0908
15-0927
BLACK 5 C
16-1450
2363 C

Be inspired by a palette that looks to desert dunes and sci-fi skies, making sandy neutrals look new with pops of bitter chocolate, coral and rose