

UNIQUE STYLE PLATFORM
ESSENTIAL INSPIRATION FOR CREATIVE MINDS

USP INSPIRE:
NEW REGENCY





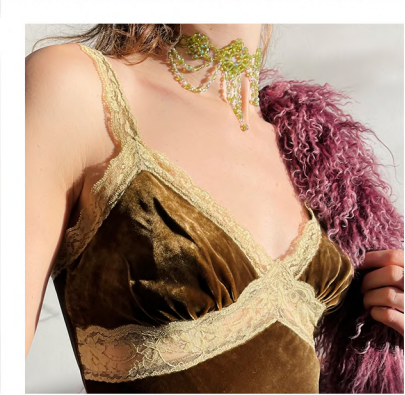
Period dramas and films have been influencing both **fashion** and **interiors**, with **regal, classical** and **historical styles** being updated for a contemporary audience through the use of **colour** and **modern twists**.

Netflix hit series *Bridgerton* takes place during the **Regency Era** and has been praised for its modern take on the period drama. Costume designer **Ellen Mirojnick** and her team of over 230 artisans made 7,500 pieces for the show, while pop music tracks were reinterpreted by a classical orchestra.

Colour plays an important role in the series, differentiating the various families. "The palette for the Bridgertons was meant to feel **romantic and refined**", Mirojnick explained, whilst the Featheringtons are always seen in **acidic brights** "to incorporate a **Versace-esque** feeling."

USP INSPIRE: NEW REGENCY

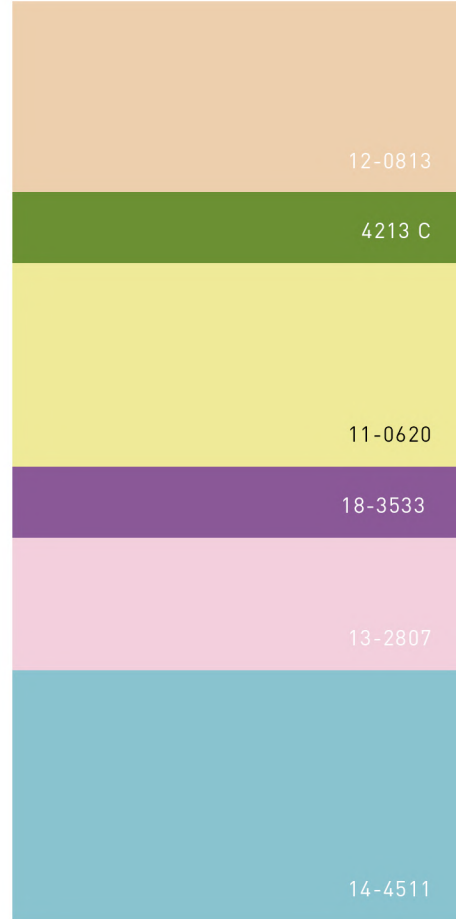
MOOD



Be inspired by classical style with a modern edge, including bold colours, brocade florals, lace and puff sleeves, with dandy dressing for men

USP INSPIRE: NEW REGENCY

COLOUR



Be inspired by a palette of traditional chintz pastels such as peach, pink and blue, highlighted with contemporary pops of apple, violet and lemon