



UNIQUE **S**TYLE **P**LATFOM  
ESSENTIAL INSPIRATION FOR CREATIVE MINDS

**USP INSPIRE:**  
COSMIC KALEIDOSCOPE





**Trippy visuals** continue to inspire **fashion** and **lifestyle**, particularly after the recent release of *Moonage Daydream*, a film which explores **David Bowie**'s creative, spiritual and musical journey in a **kaleidoscopic, colourful collage** by American director **Brett Morgen**.

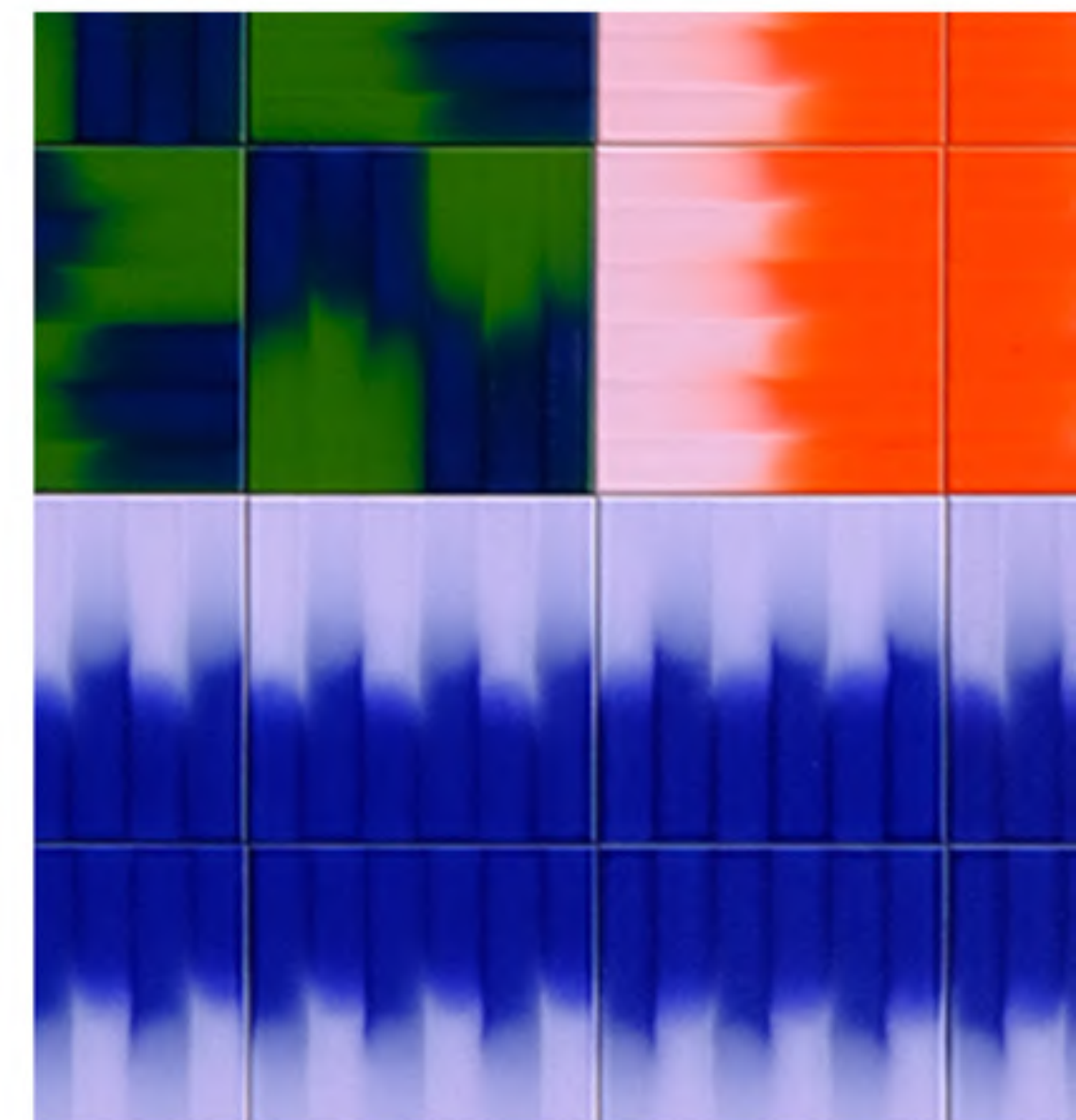
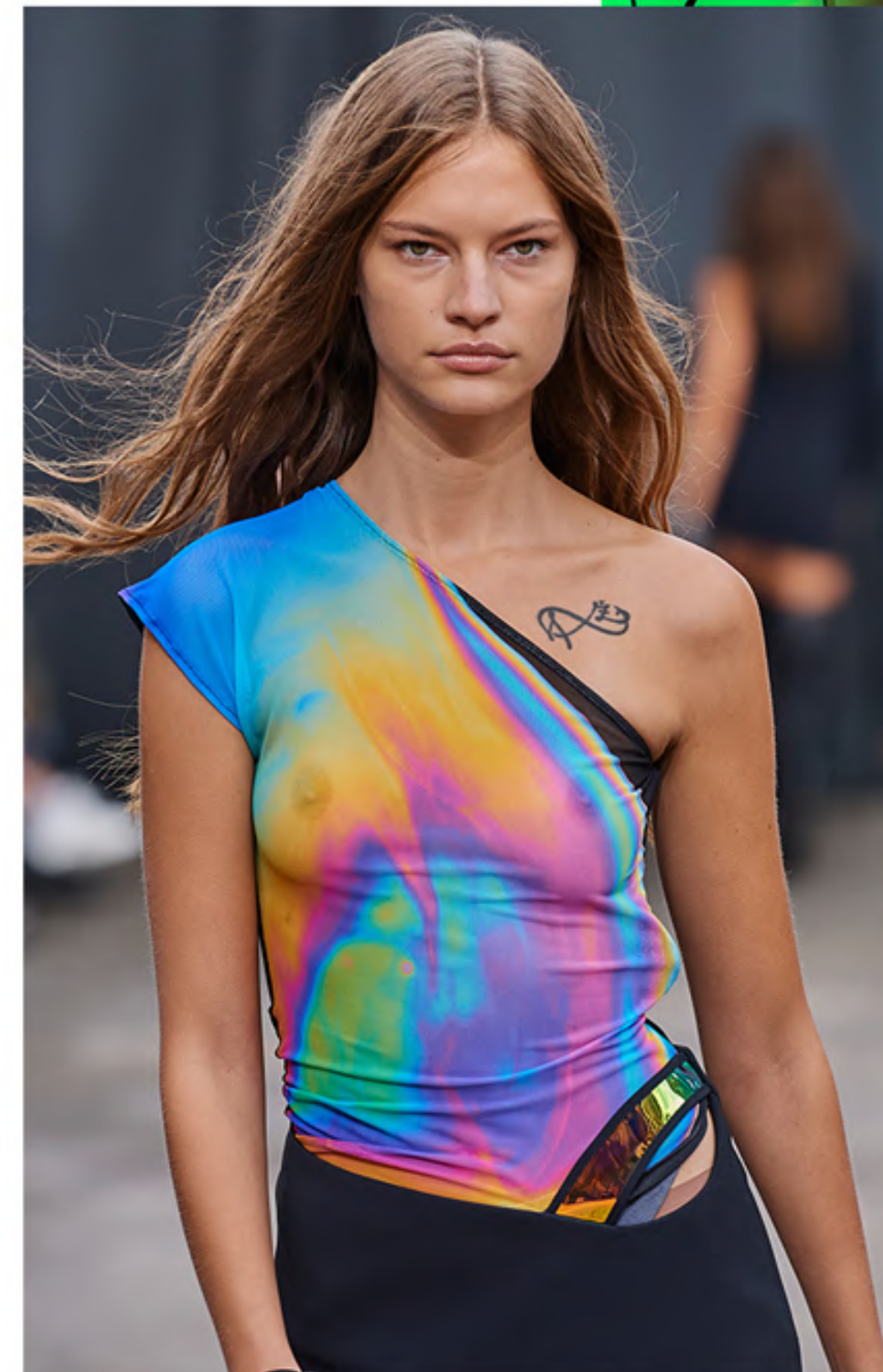
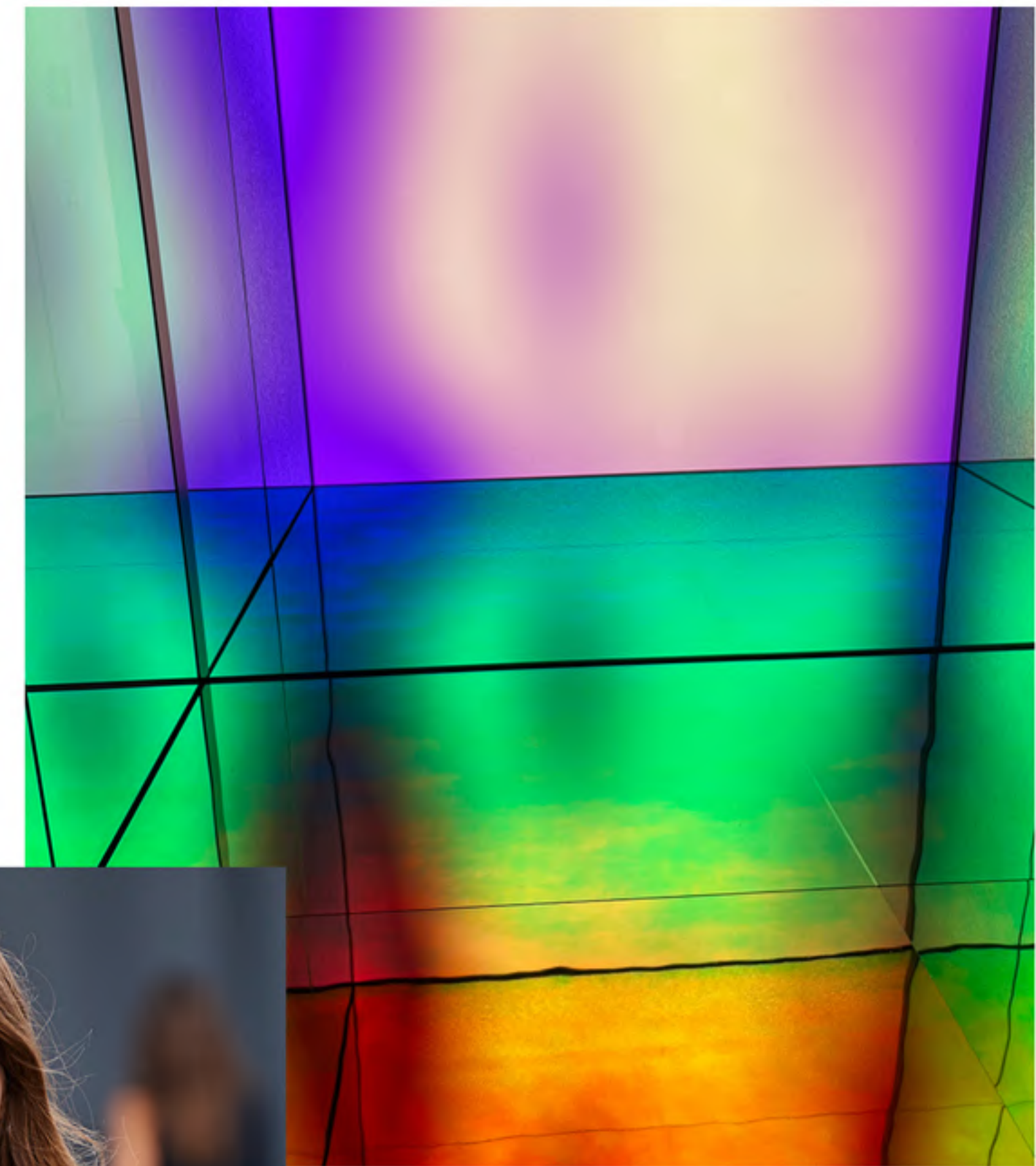
S/S 23 collections by **Bianca Saunders**, **David Koma** and **Private Policy** see **distorted geometrics, melted imagery** and **blurred pattern** in a **rainbow of contrasting shades**.

Mexican artist **Melissa Santamaría** uses synaesthesia to inform **psychedelic** visuals which she creates for musicians and music event promoters. **Sony** presented an immersive life-sized media platform at *London Design Festival*, titled *INTO SIGHT*, which played on sensorial effects through shifting light, colour and sound.



# USP INSPIRE: COSMIC KALEIDOSCOPE

## MOOD

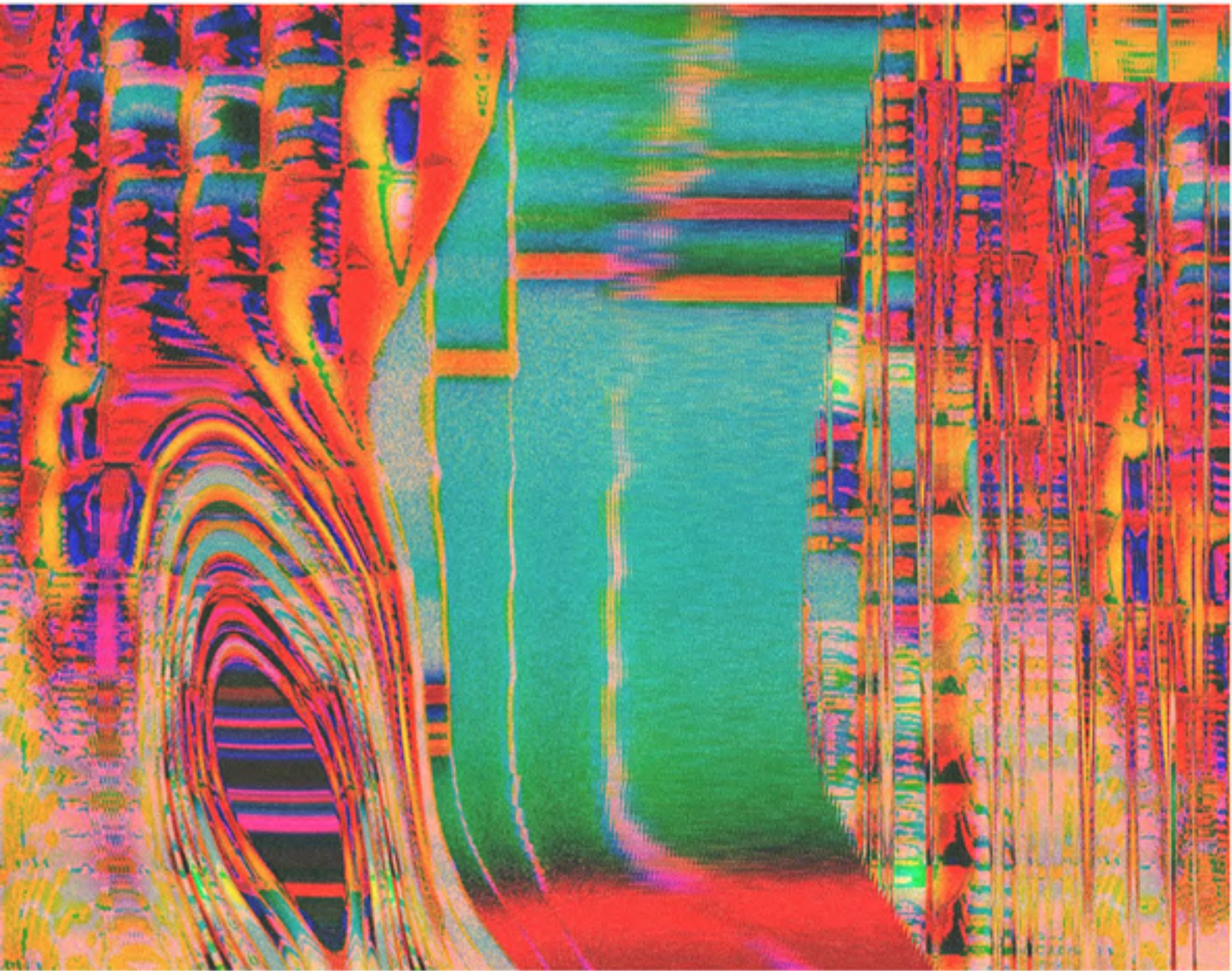
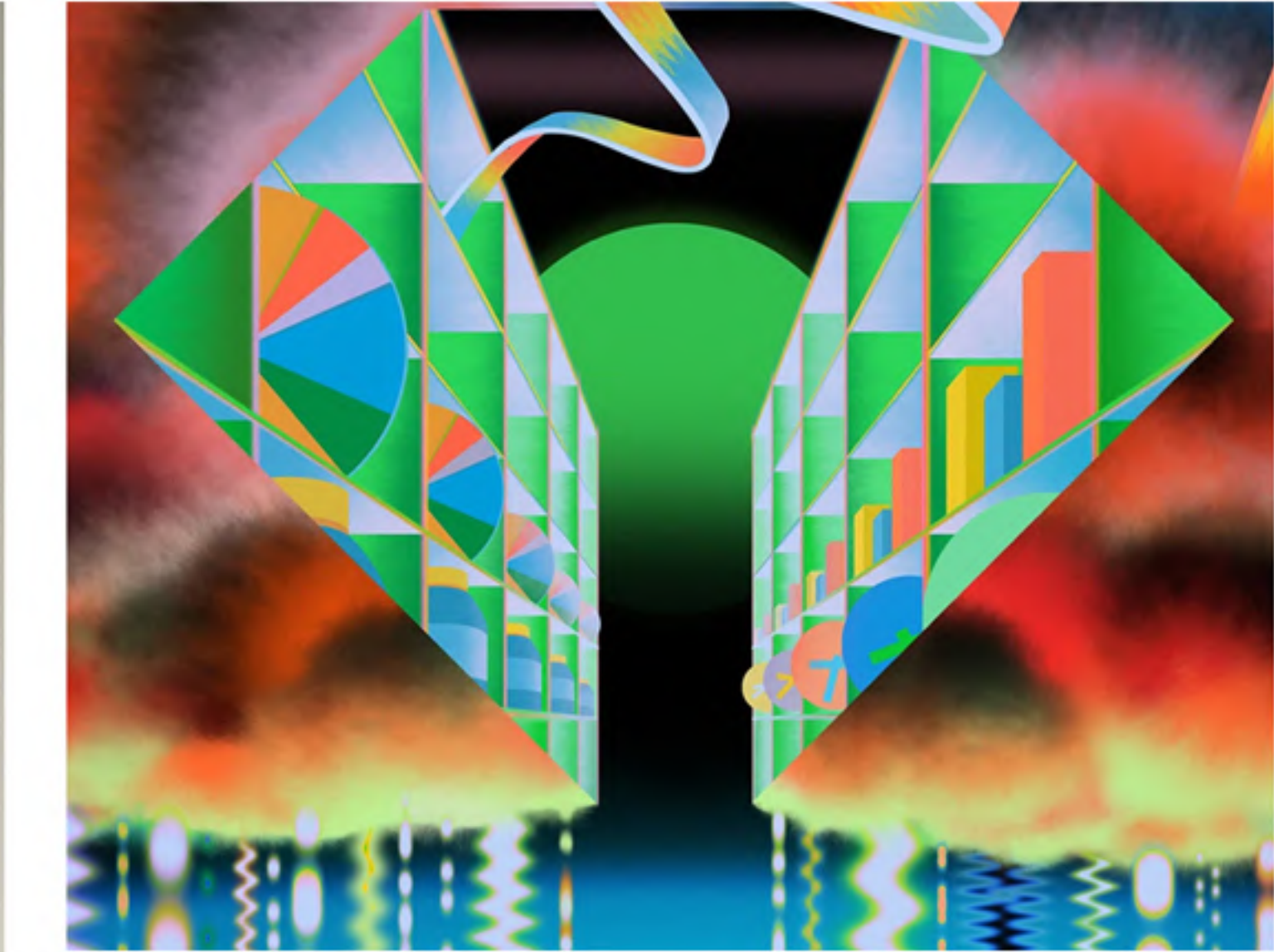


Be inspired by twisted, distorted, blurred, layered and oil slick prints in multi colours working across fashion, lifestyle and art



# USP INSPIRE: COSMIC KALEIDOSCOPE

# COLOUR



15-1335
18-2336
16-6340
13-5313
18-4434
19-5708

Be inspired by a palette of space shades of off-black and deep blue, against trippy pops of turq and emerald, contrasted by cosmic purple and jaffa